

Research Data Management at Leicester

Dr Jonathan Tedds

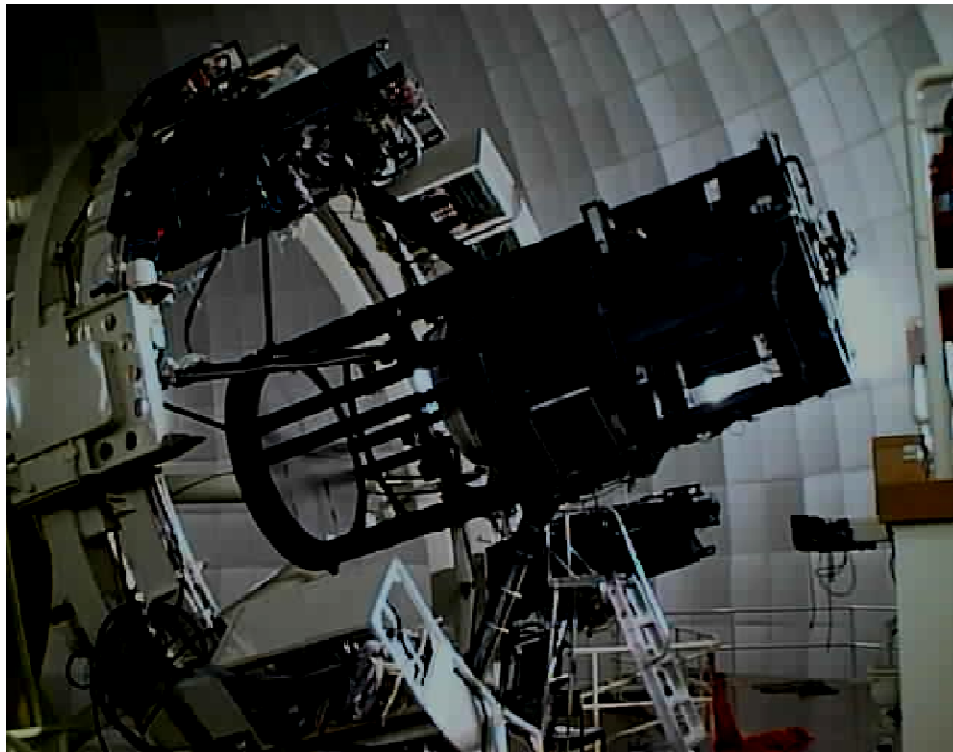
University of Leicester
Senior Research Liaison Manager
IT Services
Research Fellow
Dept of Physics & Astronomy

twitter @jtedds

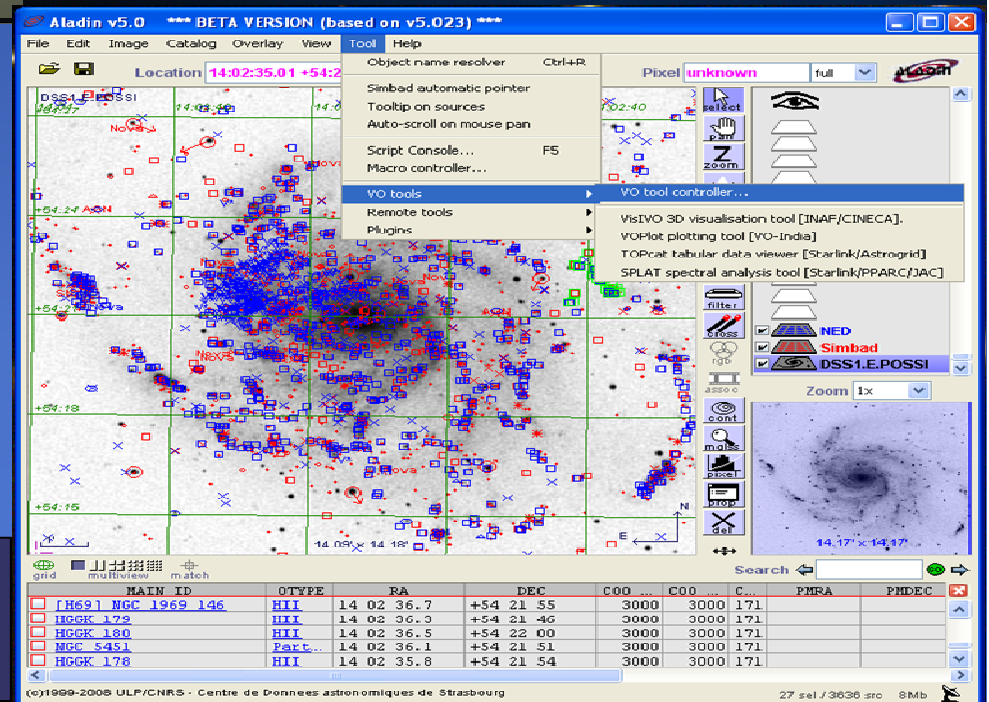
jat26@le.ac.uk



University of
Leicester



<http://www.astrogrid.org>
(April 2008 1st public release)



<http://www.astrogrid.org>

- AstroGrid front end, part of VOdesktop
- *Resource-centric*
- Select a search-space
- Search for resources
- Filter these resources
- View selected resources
- Use the selection
 - Invoke it
 - Save/Bookmark/Tag it
 - Export it

The screenshot shows the VO Explorer - XMM-DR5 application window. The interface includes a menu bar (File, Actions, Runtime, Window, Help), a toolbar with 'New Search' and 'Stop Search' buttons, and a search bar. The main content area displays a list of resources under the 'Content - Subject' and 'Coverage - Waveband' filters. The 'Resource Type' is set to 'Catalog cone search service'. The search results table lists several galaxy cluster catalogs, with 'ROSAT PSPC Catalog of Clusters of Galaxies' selected. The details panel for this catalog is visible, showing its title, URL, and a description of the catalog's contents.

Status	Title	Capability	Date
●	BAX X-Ray Galaxy Clusters and Groups Catalog	●	2007-03-28
●	Einstein Observatory Clusters of Galaxies Catalog	●	2007-03-28
●	Northern ROSAT All-Sky (NORAS) Galaxy Cluster Survey Catalog	●	2007-03-28
●	ROSAT All-Sky Survey Extended Brightest Cluster Sample	●	2007-03-28
●	ROSAT PSPC Catalog of Clusters of Galaxies	●	2007-03-28
●	ROSAT-ESO Flux-Limited X-Ray (REFLEX) Galaxy Cluster Survey	●	2007-03-28

ROSAT PSPC Catalog of Clusters of Galaxies

ROSAT/Clust., [ivo://nasa.heasarc/rosgalclus](http://vo.nasa.heasarc/rosgalclus)
Type: Catalog cone search service

This is a catalog of 203 clusters of galaxies serendipitously detected in 647 ROSAT PSPC high Galactic latitude pointings covering 158 square degrees. This is one of the largest X-ray-selected cluster samples, comparable in size only to the ROSAT All-Sky Survey sample of nearby clusters (Ebeling et al. 1997). Clusters in the inner 17.5° of the ROSAT PSPC field of view are detected using the spatial extent of their X-ray emission. Fluxes of detected clusters range from 1.6×10^{-14} to 8×10^{-12} ergs $s^{-1} cm^{-2}$ in the 0.5-2 keV energy band. X-ray luminosities range from 10^{42} ergs s^{-1} , corresponding to very poor groups, to $\sim 5 \times 10^{44}$ ergs s^{-1} , corresponding to rich clusters. The cluster redshifts range from $z = 0.015$ to $z > 0.5$. The catalog lists X-ray fluxes, core radii, and spectroscopic redshifts for 73 clusters and photometric redshifts for the remainder. Of 223 X-ray sources, 203 have been optically confirmed as clusters of galaxies. Of the remaining 20 sources, 19 are likely false detections arising from blends of unresolved point X-ray sources. Optical identifications of the remaining object are hampered by a nearby bright star. Above a flux of 2×10^{-13} ergs $s^{-1} cm^{-2}$, 98% of extended X-ray sources are optically confirmed clusters. The number of false



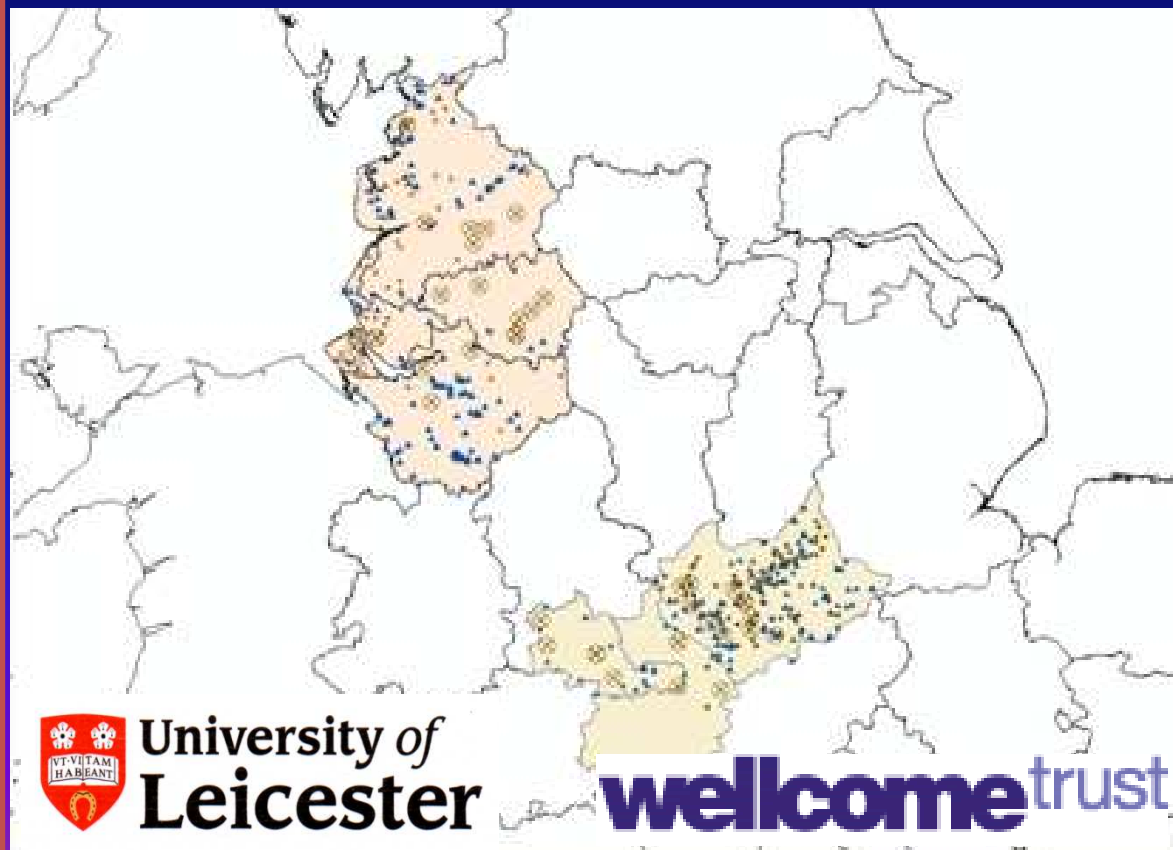
University of
Leicester

UK Research Data Service (UKRDS) pathfinder

- Key finding of HEFCE funded study 2008/9 at Leicester, Oxford, Bristol, Leeds:
 - **research facilitators = missing link**
- initial funding from Oct 09 + *need institutional level support*
- Coordinate research life cycle, expertise & training across key **institutional** stakeholders
 - **Researchers** in Colleges, depts, groups, projects
 - **IT Services** – embryonic research computing support – HPC, storage....
 - **Research Support Office** – funding, legal requirements...
 - **Library** - repository archive, ethical & training expertise...
- Coordinate to **national expertise** including
 - JISC Managing Research Data program #jiscmrd
 - Digital Curation Centre – research data management planning tools
 - RCUK & EU FP6,7 e-science program, RIN, OMII, UCISA.....

HALOGEN (History, Archaeology, Linguistics, Onomastics, GENetics):

Throwing light on the past through cross-disciplinary databasing

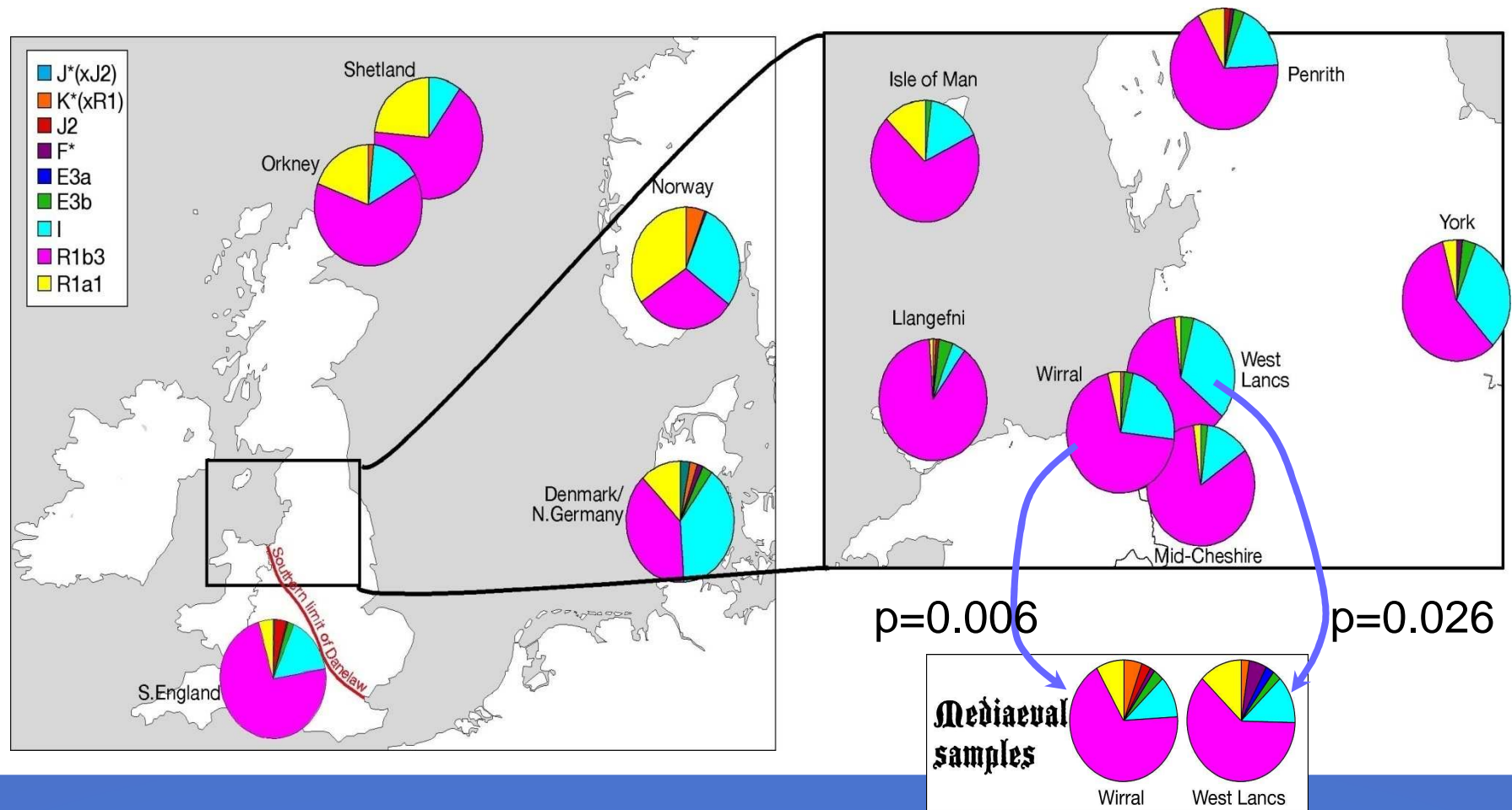


- ◆ Portable Antiquities Scheme (British Museum)
- ◆ Place-names (Nottingham)
- ◆ Surnames
- ◆ Genetics
- ◆ IT hosting and GIS
- ◆ Best practice: #JISCMRD, UKRDS, DCC, international

<http://halogen.le.ac.uk>



Genetic variation (Y data)



Halogen as template for research data management #jiscmrdr

- Requirements Analysis – must be iterative!
- *Data Management Plan* – use *DMPonline* (DCC)
- Scalable research data management infrastructure
 - pilot phase to nationally available resource
 - LAMP stack IT infrastructure: host research database – work with JISC/DCC
- A model for the long term delivery of a data management service within the institution including
 - support, maintenance, governance & charging policies
 - Include researchers, IT services, research support office, library services



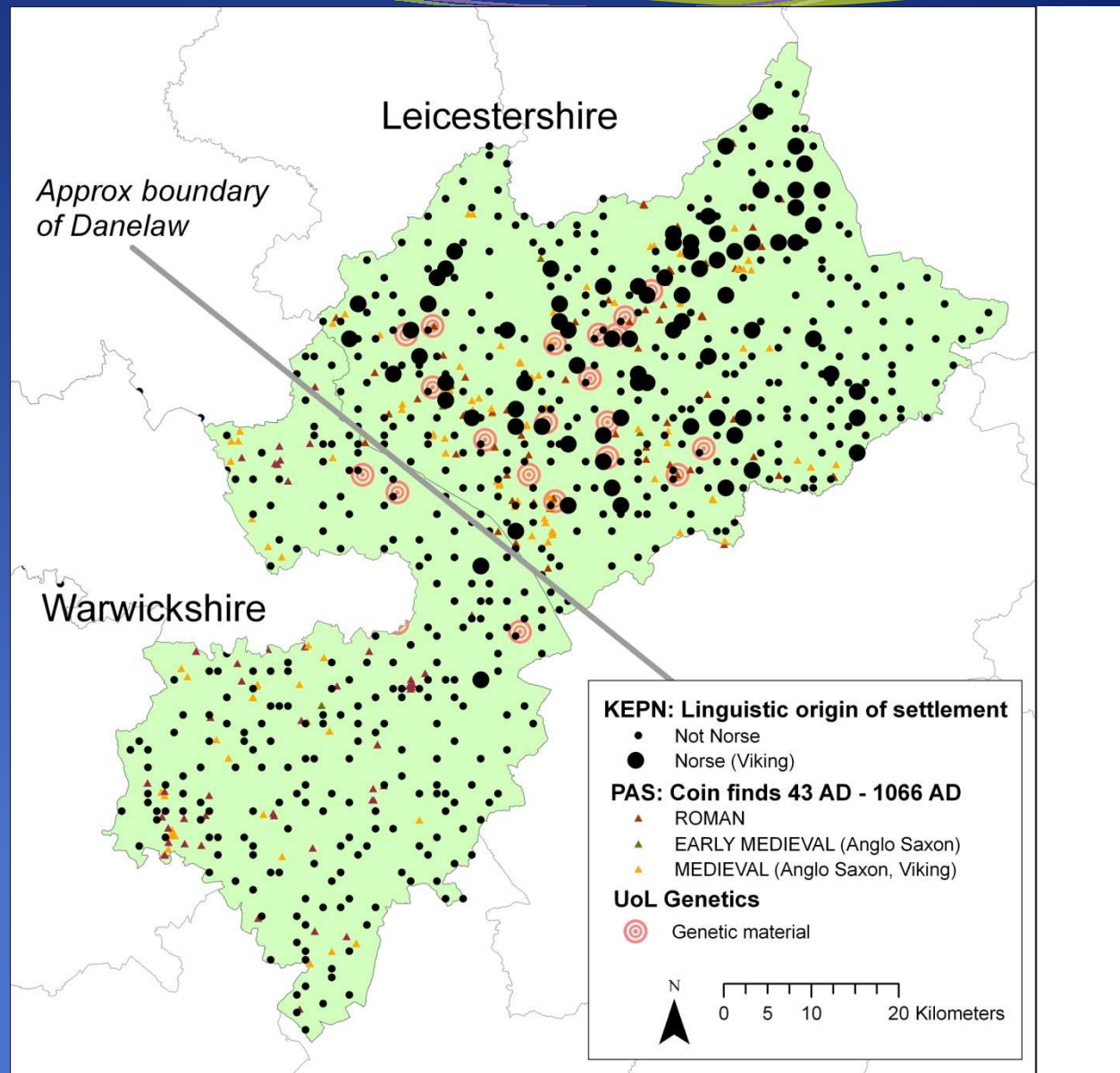
Halogen output
combines input
datasets via
Geographical
Information
Systems (GIS):

- linguistics
- archaeology
- genetics

=> #JISCgeo
programme

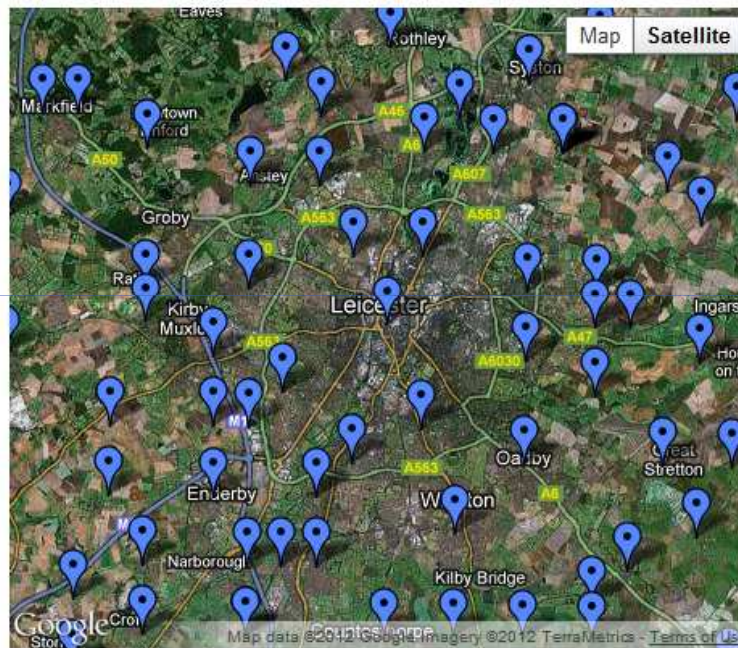


University of
Leicester



[HALOGEN Home](#) | [Query](#) | [Guide](#) | [FAQ](#) | [Partners](#) | [License](#) | [Contact us](#)

Welcome to the HALOGEN geospatial search facility



Key to English place name data around Leicester.

We host geospatial data covering the etymology of English place names, the 1881 census, genetics data and the portable antiquities data. A more in depth summary of each data set is available in the [user guide](#)

The map on the left shows an example of the data available near you. You can search specific data sets by following the links below.

Do a [English place-name etymology query](#).

Do a [genetics query](#).

Do a [census surname query](#).

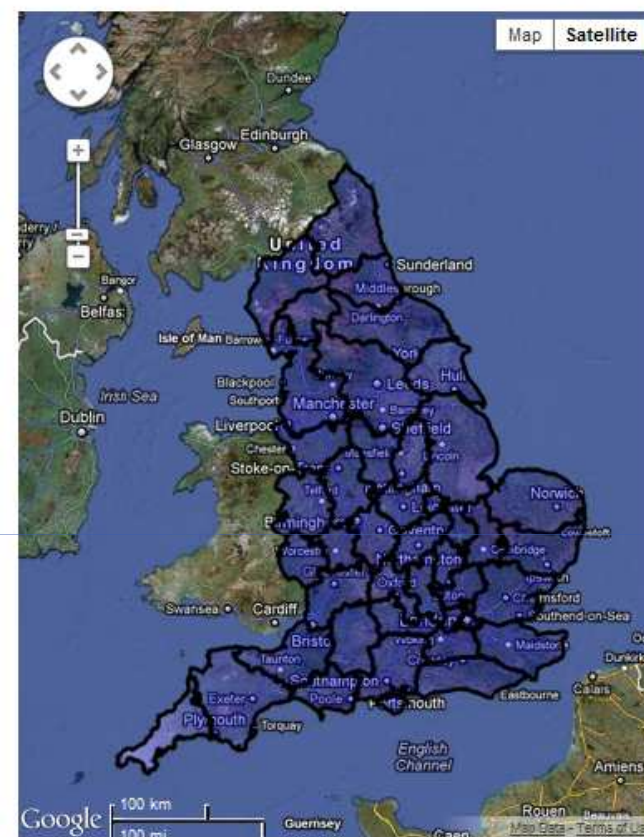
Do a [census parish query](#).

Do a [portable antiquities query](#).

Further information about the HALOGEN project can be found at www.le.ac.uk/halogen.

Key to English Place-Names

Data provided by the Institute for Name-Studies at the University of Nottingham.



County boundaries - © Great Britain Historical GIS Project,
University of Portsmouth.

Search by county:

Click on the counties on the map, or select from the list. Hold Ctrl to select multiple counties from the list.

ALL COUNTIES

Bedfordshire
Berkshire
Buckinghamshire
Cambridgeshire
Cheshire
Cornwall

Search by language:

(Hold Ctrl to select multiple languages.)

ALL LANGUAGES

Celtic
French
Old English
Old Norse
Latin
Anglian

Search by element:

Hover your mouse over the elements for their definition, or look at the list of [valid elements](#). Hold Ctrl to select multiple elements from the list.

ALL ELEMENTS

-aco-
-an
-binde
-dwostle
-ek
-ell

Search by place name:

Exact match

Submit

Reset



University of
Leicester

JISC

The University of
Nottingham

THE
BRITISH
MUSEUM

Portable Antiquities Scheme



County boundaries - © Great Britain Historical GIS Project,
University of Portsmouth.

Search by county:

Click on the counties on the map, or select from the list. Hold Ctrl to select multiple counties from the list.

ALL COUNTIES

Bedfordshire
Berkshire
Buckinghamshire
Cambridgeshire
Cheshire
Cornwall

Search by period:

ALL PERIODS

Bronze age
Byzantine
Early Medieval
Foreign
Greek and Roman pro
Iron age

Submit

Reset



University of
Leicester

JISC

The University of
Nottingham
UNITED KINGDOM • CHINA • MALAYSIA

THE
BRITISH
MUSEUM

CHALLENGES

- *interdisciplinary research database*
 - ingest each input dataset in form such that sufficient information is carried forward to enable interoperation
 - Cultural differences
- *versioning & provenance* for input datasets
- *which software tools, infrastructure , Query interface?*
 - suitable for multi disciplinary researchers
- *Requirements upon the institution* for sustaining the research assets
- *Requirements upon the researchers*
 - Annotating
 - Refreshing
 - Maintenance of datasets



DIRECT BENEFITS

- *New research opportunities*
 - Cross database work – seed new research samples
- *Scholarly communication/access to national resources*
 - Key to English Place Names (Nottingham)
 - Portable Antiquities Scheme (British Museum)
- *Verification, re-purposing, re-use of data*
 - Cleaning & enhancing private research datasets for reuse & correlation
 - Increased transparency
 - excellent training for best practice in research data management
- *Increasing research productivity*
 - Build in cleaning, annotation, enhancement into normal research workflows
 - research datasets may immediately be reusable and interoperable
- *Impact & Knowledge Transfer*
 - Reuse IT infrastructure: EU FP7 Mintweld (industrial engineering) & BRICCS National Health Service/University Trust data sharing.
- *Increasing skills base of researchers/students/staff*



Reward = Leverhulme Trust funding £1.3m!

The Impact of Diasporas *on* The Making of Britain

Evidence
Memories
Inventions



University of
Leicester



The University of
Nottingham

INDIRECT BENEFITS (COSTS AVOIDED)

- *No re-creation of data*
 - Researchers avoid valuable time needed to transcribe external data sources
- *Inter disciplinary research platform available centrally for reuse as a service*
- *Lower future preservation costs*
 - Reusable Service Level Agreements in place
 - Not dependent on individuals alone
- *Re-purposing data, methodologies for new audiences*
 - Internal & national research resources can become nationally reusable
 - e.g. Geneticists learn better spatial correlation analysis techniques
- *Protecting returns on earlier investments*
 - research funders: Wellcome Trust, Leverhulme Trust, AHRC, British Museum
 - Institutions: Universities of Leicester, Nottingham, UCL



Biomedical Research Infrastructure Software Service: **BRISKit**

<http://www.le.ac.uk/brisikit>

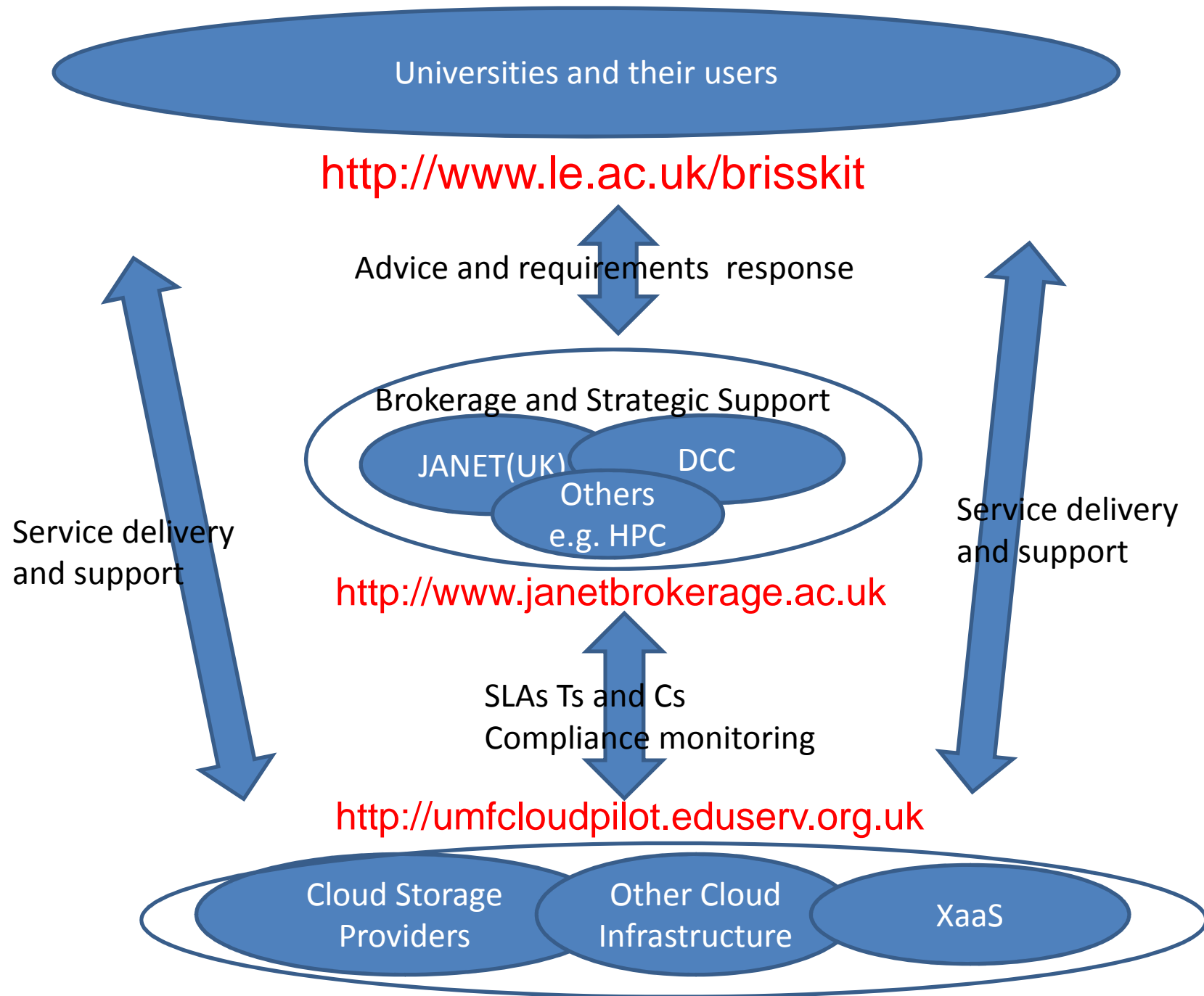
- JISC University Modernisation Fund 2011/12
- UoL ITS-RCS, Cardiovascular, Genetics & Health Sciences + UHL Trust
- *develop national shared service in cloud with Eduserv on VMware*
- *brokered by JANET*
- **host, implement, deploy biomedical research database applications**
 - *Remove duplication of highly skilled development effort via*
 - *Design from scratch*
 - *Buy & administer*
- developed prototype open source IT infrastructure for the Biomedical Research Informatics Centre for Cardiovascular Science in the NIHR Leicester Cardiovascular Biomedical Research Unit
 - *Anonymised versions of patient sensitive databases are hosted for University researchers on LAMP VMware platform implemented by Research Computing Service in IT Services*



University of
Leicester



National Institute for Health Research
**Leicester Cardiovascular
Biomedical Research Unit**

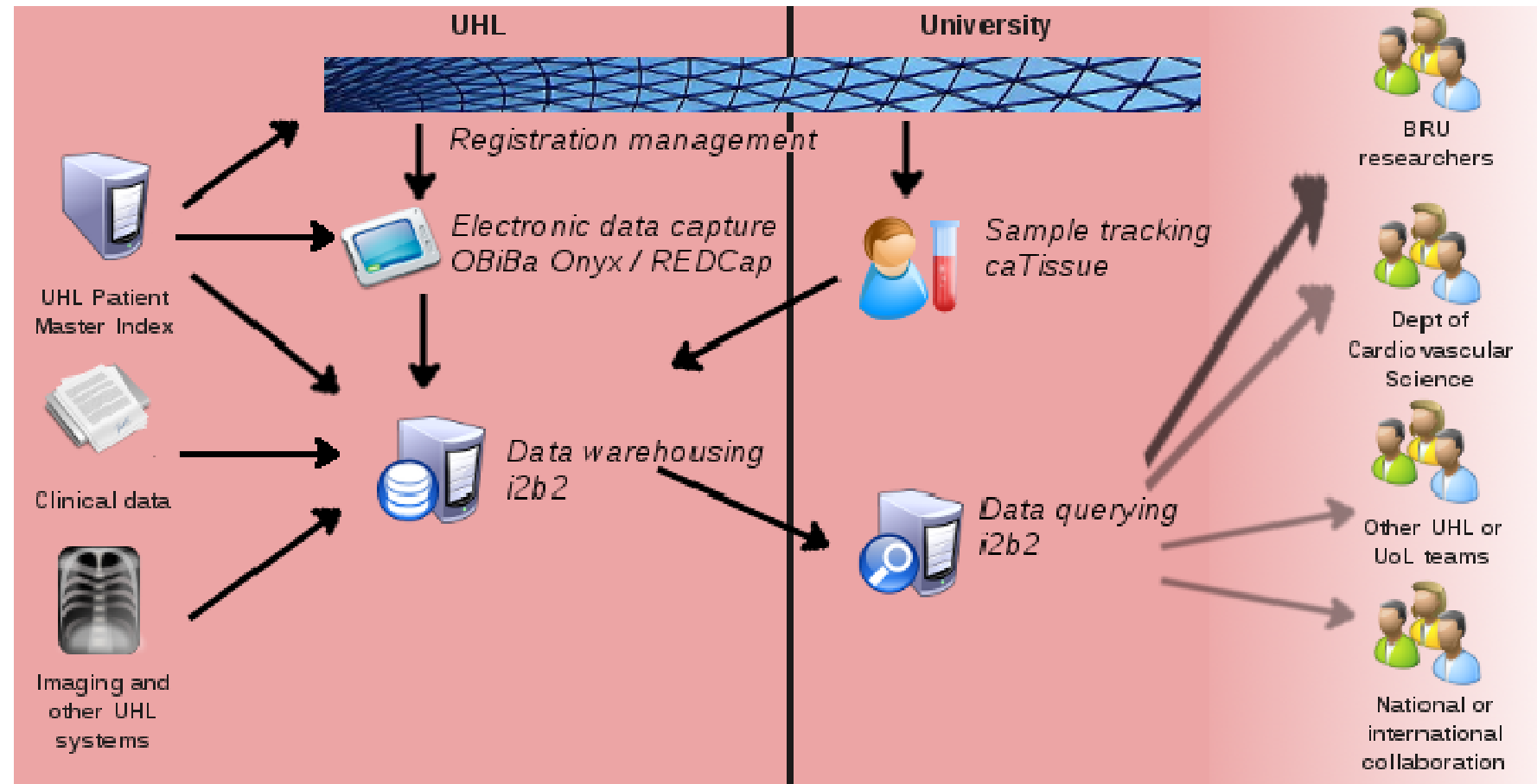


BRISKit: Biomedical Research Infrastructure Software Service kit

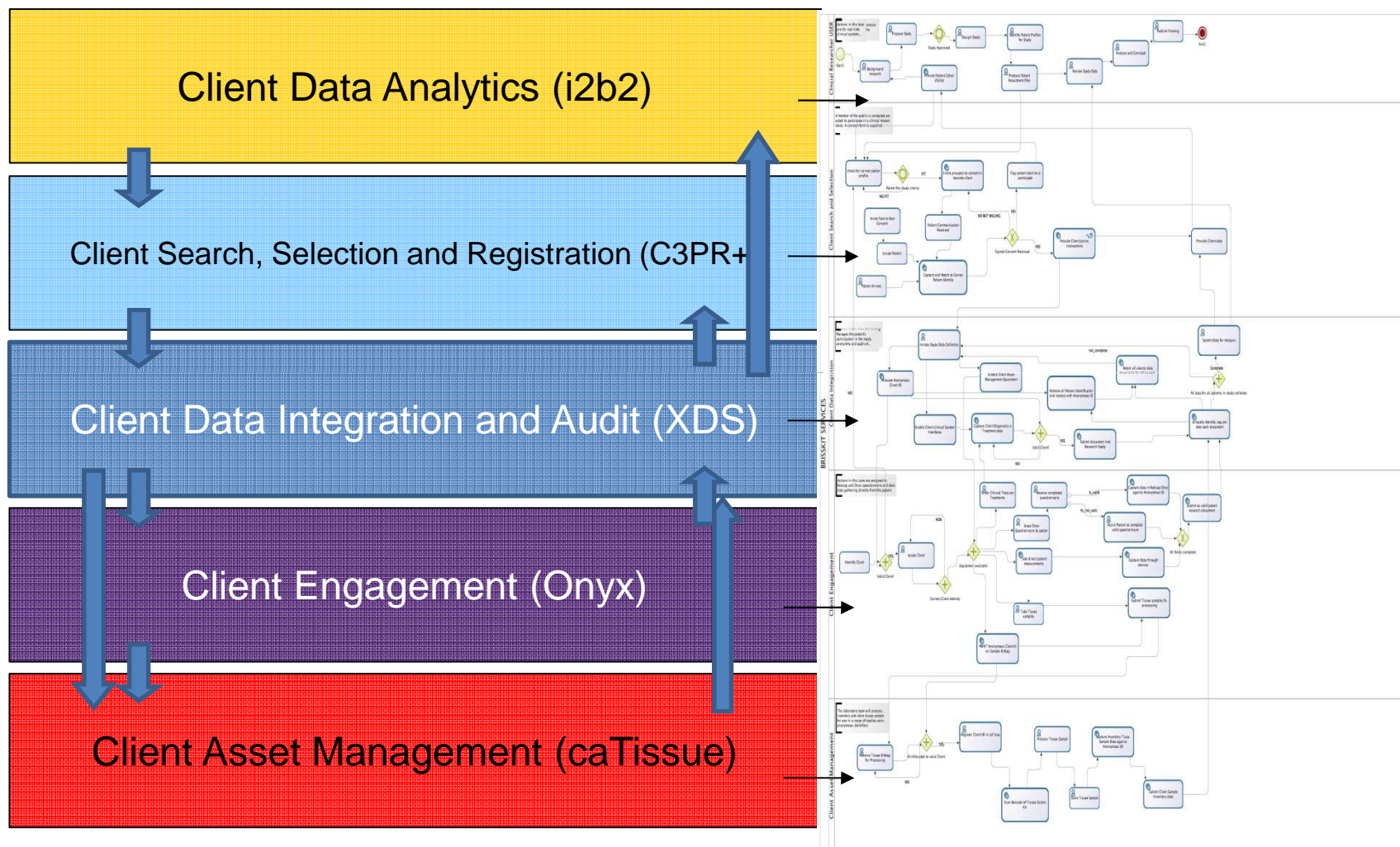


**National Institute for
Health Research**

- Electronic Data Capture / questionnaire – *OBiBa Onyx / REDcap*
- Specimen Inventory / sample tracking – *caTissue*
- Cohort selection and data querying - *i2b2*



Service Options



PROCESSES

BRISKit Sustainability - OS engagement

- *OS community engagement*
 - *standards compliance*
 - *service vision*
- *Cross-enterprise Service Architecture:*
 - how to join & use service for new groups & partners
 - Definition of service vision, organisational & service components
 - all relevant standards & tools which Brisskit partners will be expected to use and comply with
- *OS Community Engagement Charter*
 - defining engagement with existing & new OS communities
 - including adoption & code commitments

BRISKit - meeting a challenge?

Is there value in delivering cloud-based applications as a service to researchers?

- Ease of deployment, administration and archiving
- Cost of computing can be scaled to projects
- Model lends itself to distributed projects and teams
- Infrastructure can be geared to integration
- Enhanced basis for data sharing and federation

- Need to ensure sustainability of the service
- Confidentiality and governance

<http://www.le.ac.uk/BRISKit>

ORGANISATIONAL CHALLENGES AND SOLUTIONS

- *Cultural differences*

- Recognise different cultures and mind sets
 - research community and IT specialists in central services
 - different professional language, expectations and working practises
 - management of a research project usually requires a different, iterative methodology than an IT infrastructure project having a more clearly pre determined end point

- *Research Liaison Role*

- strong research background helps!
- enables effective ways of liaising with research community
- bridging gaps in understanding

- *Leveraging expertise within and external to the organisation*

- coordinate 'specialists'

- See Research Fortnight blog piece Feb 2011



University of
Leicester

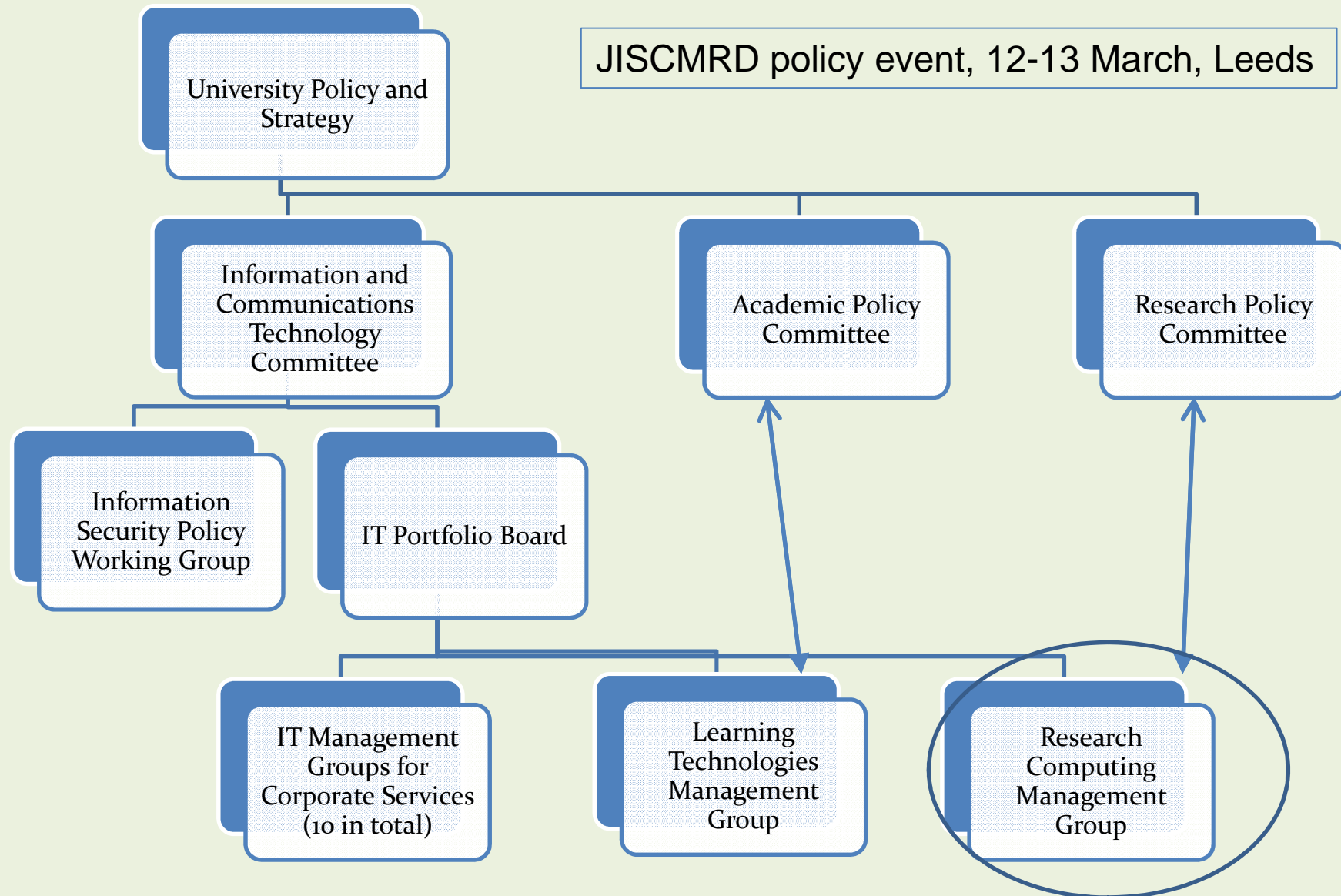
Top Tip: how to get researchers' attention?

- Research grant pre-award costing (LUCRE - SAP based)
 - Dominates researchers' minds!
 - Enable PIs to build grant application using actual costs of staff, overheads, and the right rules for funder
 - **Trigger involvement of IT Research Liaison** and wider institutional expertise via flags
 - sensitive research data
 - costing/planning support including curation and preservation over research lifecycle
 - Track institution wide needs via IT Service Desk

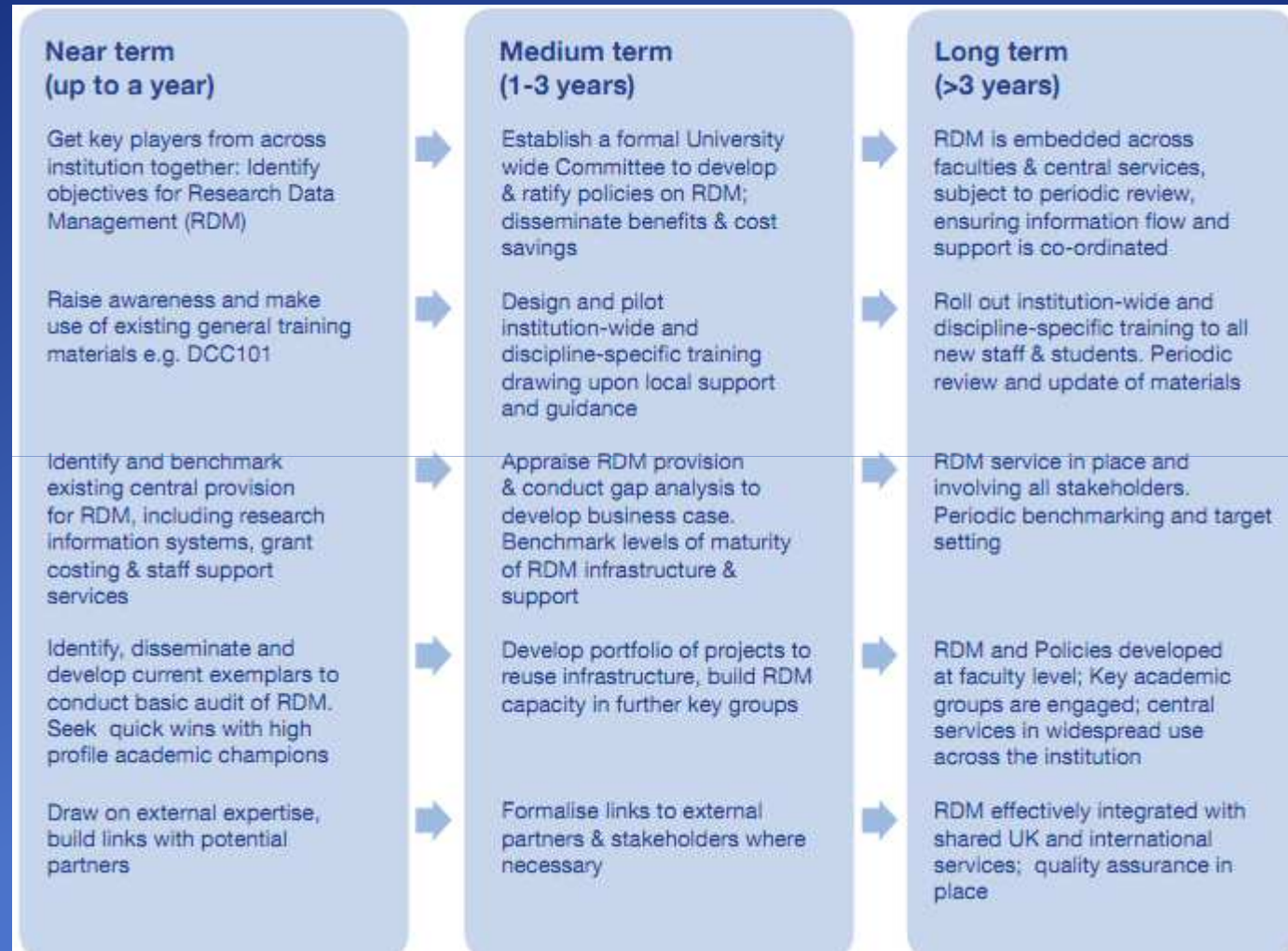


Ad Governance

JISCMRD policy event, 12-13 March, Leeds



Suggested institutional timeline





University of
Leicester

Priorities for IT service enhancement and future investment in research computing

- **Storage & curation**
 - Research data management & planning - including sensitive data
 - LINUX platform, LAMP stack database hosting
 - training
- **Performance**
 - HPC on demand, network fit for purpose
- **Enable Collaboration**
 - Internal/external (including non HEIs)
 - Across ITS, RSO, Library for researchers
- **Coordinate Expertise**
 - Cross disciplinary - Halogen (GIS), BRICCS (astronomy e-science)
 - Grant bidding - IT costing & support
 - Best practice (JISC, DCC, UKDA..international)



Levels of funding for BRCs and BRUs

